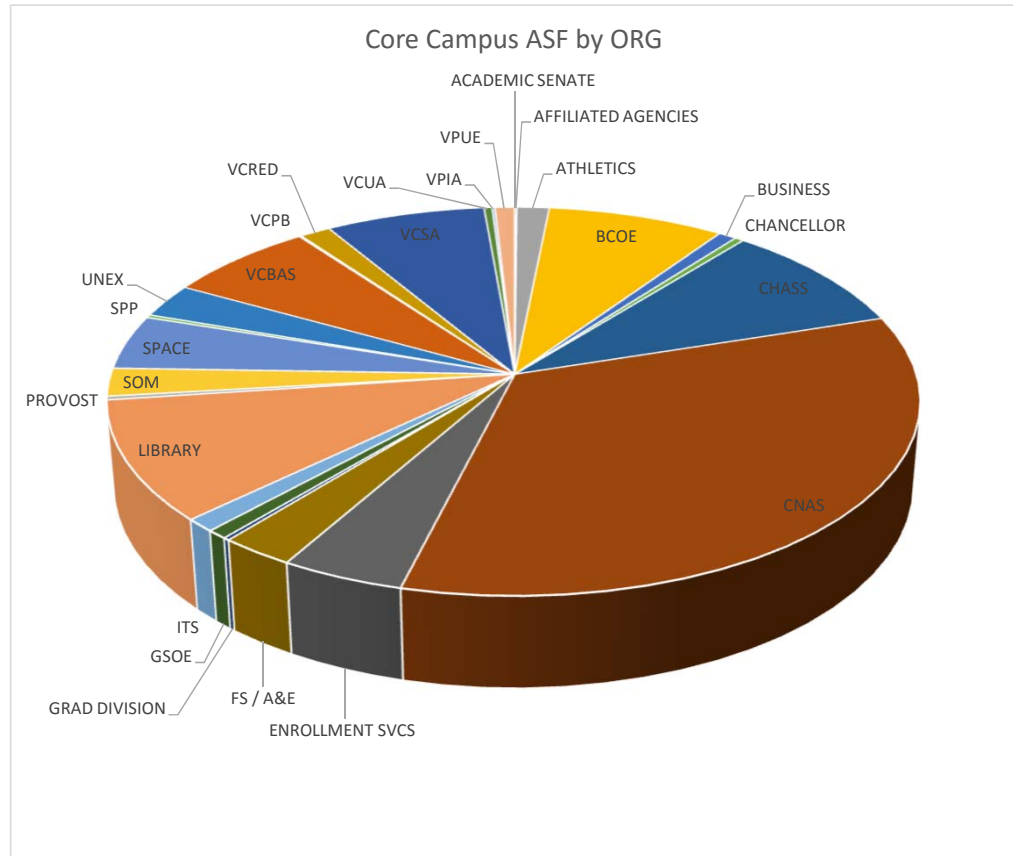


Core Campus Space Summary (excludes residential and health)
Fall 2018 FMS Data

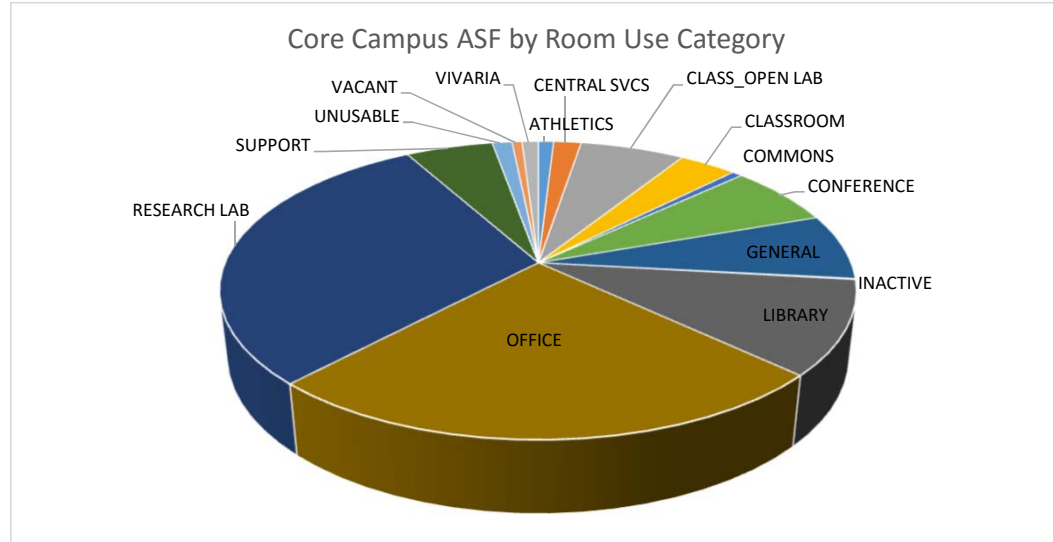
ORGANIZATION	ASF	GSF	% of Total Space
ACADEMIC SENATE	2,148	3,304	0.07%
AFFILIATED AGENCIES	641	986	0.02%
ATHLETICS	42,658	65,628	1.46%
BCOE	233,292	358,912	8.01%
BUSINESS	23,746	36,532	0.82%
CHANCELLOR	11,780	18,124	0.40%
CHASS	269,801	415,078	9.26%
CNAS	986,858	1,518,243	33.88%
ENROLLMENT SVCS	126,133	194,051	4.33%
FS / A&E	76,244	117,298	2.62%
GRAD DIVISION	6,324	9,729	0.22%
GSOE	21,086	32,441	0.72%
ITS	31,432	48,356	1.08%
LIBRARY	291,020	447,723	9.99%
PROVOST	8,836	13,594	0.30%
SOM	67,733	104,204	2.32%
SPACE	131,667	202,564	4.52%
SPP	7,464	11,482	0.26%
UNEX	82,211	126,478	2.82%
VCBAS	197,616	304,025	6.78%
VCPB	3,008	4,627	0.10%
VCRED	40,710	62,630	1.40%
VCSA	210,596	323,993	7.23%
VCUA	10,525	16,193	0.36%
VPIA	3,862	5,942	0.13%
VPUE	25,844	39,760	0.89%
Grand Total	2,913,233	4,481,897	100.00%



Core Campus Space by Room Use Category
Fall 2018 FMS Data

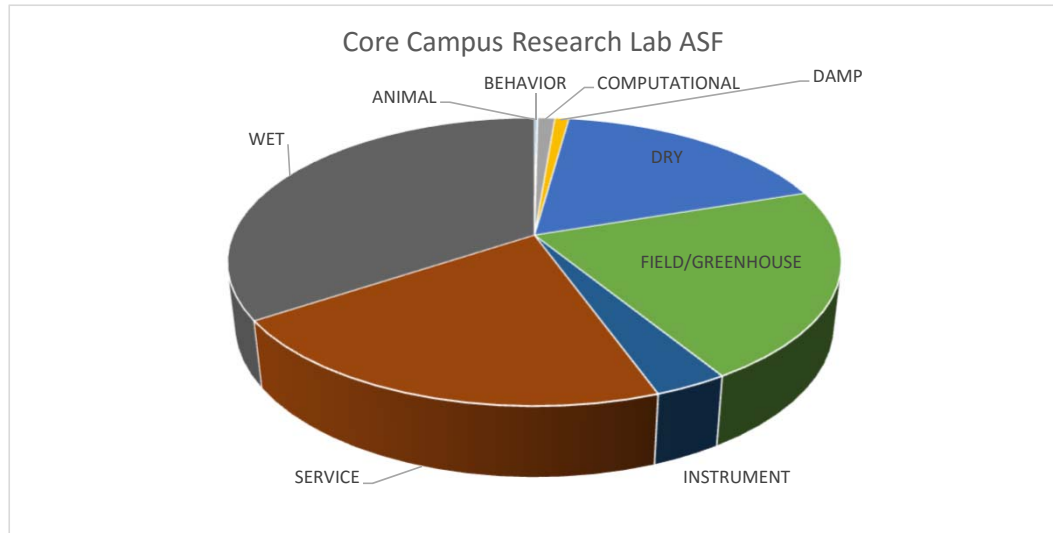
ALL ROOM CATEGORIES

CATEGORY	ASF	GSF	% OF SPACE
ATHLETICS	26,829	41,275	1%
CENTRAL SVCS	48,543	74,681	2%
CLASS_OPEN LAB	184,341	283,602	6%
CLASSROOM	101,734	156,514	3%
COMMONS	18,164	27,944	1%
CONFERENCE	191,494	294,606	7%
GENERAL	207,373	319,036	7%
INACTIVE	3,173	4,881	0%
LIBRARY	296,085	455,516	10%
OFFICE	728,966	1,121,485	25%
RESEARCH LAB	871,368	1,340,566	30%
SUPPORT	153,809	236,630	5%
UNUSABLE	34,882	53,665	1%
VACANT	17,691	27,216	1%
VIVARIA	28,781	44,279	1%
Grand Total	2,913,233	4,481,897	100%



RESEARCH SUB-CATEGORIES

Research Type	ASF	GSF	% of Space
ANIMAL	1,169	1,799	0.13%
BEHAVIOR	575	885	0.07%
COMPUTATIONAL	9,386	14,440	1.08%
DAMP	7,686	11,825	0.88%
DRY	154,086	237,055	17.68%
FIELD/GREENHOUSE	186,442	286,834	21.40%
INSTRUMENT	28,553	43,928	3.28%
SERVICE	184,233	283,435	21.14%
WET	299,237	460,365	34.34%
Grand Total	871,368	1,340,566	100.00%



RESEARCH OFFICE SPACE BY SCHOOL / COLLEGE
Excludes office service space

CATEGORY / ORGANIZATION	ASF	STATIONS	AVG ASF / Station
ACAD OFF - FACULTY			
BCOE	19,232	144	134
BUSINESS	5,345	41	130
CHASS	52,361	380	138
CNAS	55,974	409	137
GSOE	3,962	33	120
LIBRARY	230	3	77
SOM	3,867	27	143
SPP	2,395	17	141
VCRED	374	6	62
ACAD OFF - GRAD & PD			
BCOE	9,962	214	47
BUSINESS	621	9	69
CHASS	8,672	82	106
CNAS	59,088	1,062	56
GSOE	1,141	30	38
SOM	1,505	-	0
SPP	388	6	65
ACAD OFF - LECTURER			
BCOE	1,576	20	79
BUSINESS	1,141	15	76
CHASS	7,675	99	78
CNAS	1,574	16	98
GSOE	1,438	18	80
SOM	474	1	474
VPUE	3,118	65	48
ACAD OFF - OTHER			
BCOE	280	3	93
CHASS	157	1	157
CNAS	4,487	43	104
GSOE	309	9	34
SOM	128	1	128
SPP	132	4	33
VPUE	118	1	118
ACAD OFF - TA			
BCOE	1,526	31	49
BUSINESS	626	10	63
CHASS	13,974	254	55
CNAS	5,829	155	38
GSOE	281	7	40
VPUE	1,483	59	25
ACAD OFF -RES STAFF			
CHASS	1,359	17	80
CNAS	5,669	48	118
GSOE	3,612	44	82
SOM	371	-	0
VCRED	517	3	172
Grand Total	282,973	3,387	84

ADMINISTRATIVE OFFICE SPACE BY ORGANIZATION

Excludes office service space

ORGANIZATION	ASF	STATIONS	AVG ASF / Station
ACADEMIC SENATE	1,268	9	141
ATHLETICS	8,034	80	100
BCOE	18,030	147	123
BUSINESS	5,409	40	135
CHANCELLOR	5,882	48	123
CHASS	25,978	189	137
CNAS	35,457	283	125
ENROLLMENT SVCS	12,907	140	92
FS / A&E	10,051	93	108
GRAD DIVISION	3,970	37	107
GSOE	4,635	34	136
ITS	14,131	164	86
LIBRARY	18,961	132	144
PROVOST	6,898	66	105
SOM	11,056	106	104
SPP	3,144	17	185
UNEX	22,910	193	119
VCBAS	36,481	327	112
VCPB	2,477	19	130
VCRED	9,186	81	113
VCSA	43,227	387	112
VCUA	7,569	73	104
VPIA	3,553	24	148
VPUE	8,261	82	101
Grand Total	319,475	2,771	115

CONFERENCE ROOMS BY ORGANIZATION

Includes Conference and Scholarly Activity room uses

ORGANIZATION	ASF	# ROOMS
ACADEMIC SENATE	792	2
BCOE	13,200	25
BUSINESS	4,336	10
CHANCELLOR	3,352	10
CHASS	25,517	58
CNAS	37,926	102
ENROLLMENT SVCS	3,018	6
FS / A&E	1,213	5
GRAD DIVISION	1,163	3
GSOE	2,020	5
ITS	1,551	8
LIBRARY	4,680	12
PROVOST	784	2
SOM	4,595	14
SPP	401	1
UNEX	10,831	13
VCBAS	9,487	22
VCPB	279	2
VCRED	1,413	5
VCSA	23,754	36
VCUA	765	3
VPUE	2,743	12
Grand Total	153,820	356

USC SPACE METRICS BY ORGANIZATION

SPACE USE PER FMS FALL 2018 – DRAFT FOR INTERNAL USC DISCUSSION

- Core campus space only
- Excludes residential and health space

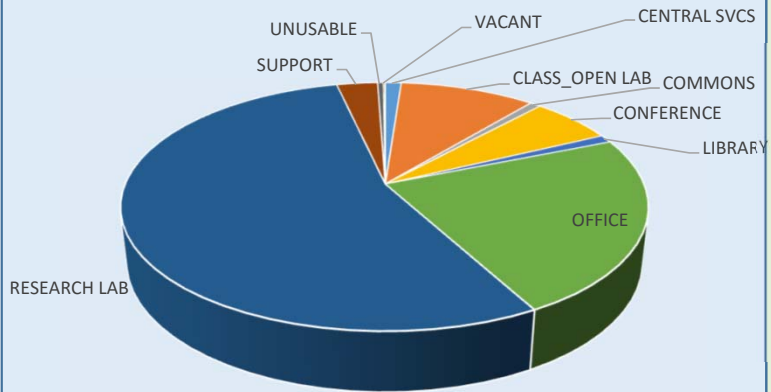
FMS room use codes included in each Room Use Category:

- Athletics – Intercollegiate Athletics space
- Central Services – services such as ITS, EH&S
- Class_Open Lab – instructional class labs and service
- Classroom – general assignment instructional rooms and service
- Commons – space such as HUB common areas
- Conference – conference and service
- General – food, merchandising, day care, recreation
- Inactive – inactive available
- Library – library, study, tutorial
- Office – academic and administrative, service rooms
- Research Lab – all categories of research labs and support rooms
- Support – storage, shop
- Unusable – inactive not-available, alteration
- Vacant – assigned to a department but not to an individual
- Vivaria – animal care spaces

BCOE Space Dashboard – Fall 2018 FMS Data Internal Draft for USC Discussion

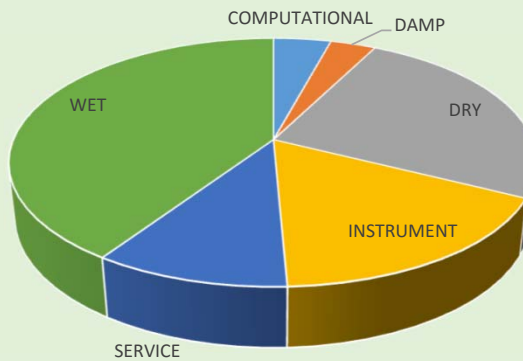
Space Use Category	ASF	GSF	% of Total
CENTRAL SVCS	2,704	4,160	1.16%
CLASS_OPEN LAB	23,028	35,428	9.87%
COMMONS	1,816	2,793	0.78%
CONFERENCE	14,140	21,753	6.06%
LIBRARY	2,368	3,644	1.02%
OFFICE	53,993	83,066	23.14%
RESEARCH LAB	126,985	195,361	54.43%
SUPPORT	6,953	10,696	2.98%
UNUSABLE	990	1,523	0.42%
VACANT	316	486	0.14%
GRAND TOTAL	233,292	358,912	100.00%

BCOE Core Campus ASF by Space Use Category



Research Space Category	ASF	GSF	% of Total Space
COMPUTATIONAL	5,325	8,193	4.19%
DAMP	4,210	6,477	3.32%
DRY	31,620	48,646	24.90%
INSTRUMENT	21,454	33,006	16.89%
SERVICE	12,800	19,693	10.08%
WET	51,576	79,347	40.62%
GRAND TOTAL	126,985	195,361	100.00%

BCOE Core Campus Research ASF



Office Categories	ASF	Stations	AVG ASF / Station
ACAD OFF - FACULTY	19,232	144	134
ACAD OFF - GRAD & PD	9,962	214	47
ACAD OFF - LECTURER	1,576	20	79
ACAD OFF - OTHER	280	3	93
ACAD OFF - TA	1,526	31	49
ADMINISTRATIVE	18,030	147	123
GRAND TOTAL	50,606	559	91

*Excludes office service space

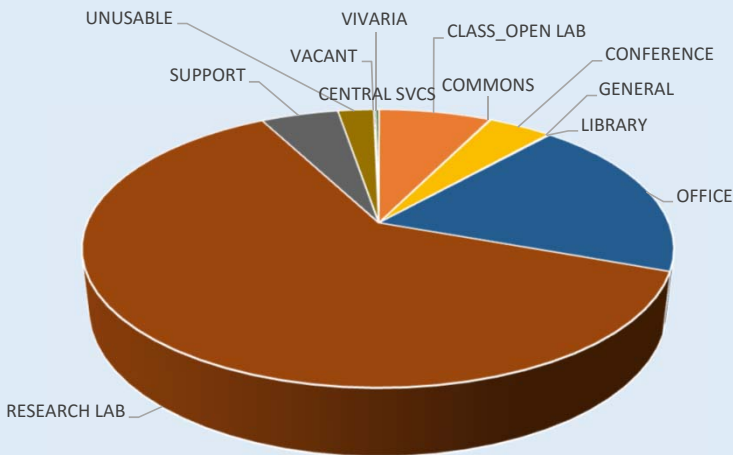
AVG ASF / Office Station



CNAS Space Dashboard – Fall 2018 FMS Data Internal Draft for USC Discussion

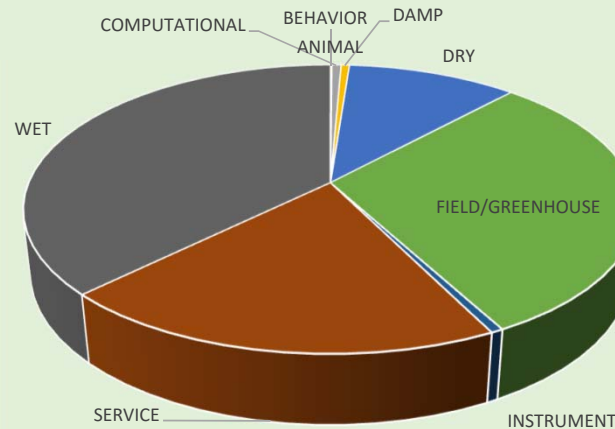
Space Use Category	ASF	GSF	% of Total
CENTRAL SVCS	258	397	0.03%
CLASS_OPEN LAB	71,988	110,751	7.29%
COMMONS	622	957	0.06%
CONFERENCE	40,688	62,597	4.12%
GENERAL	121	186	0.01%
LIBRARY	1,081	1,663	0.11%
OFFICE	186,550	287,001	18.90%
RESEARCH LAB	609,625	937,884	61.77%
SUPPORT	49,673	76,420	5.03%
UNUSABLE	23,000	35,384	2.33%
VACANT	1,217	1,873	0.12%
VIVARIA	2,035	3,131	0.21%
Total ASF	986,858	1,518,243	100.00%

CNAS Core Campus ASF by Space Use Category



Research Space Category	ASF	GSF	% of Total Space
ANIMAL	146	225	0.02%
BEHAVIOR	386	594	0.06%
COMPUTATIONAL	3,556	5,470	0.58%
DAMP	3,173	4,881	0.52%
DRY	65,207	100,319	10.70%
FIELD/GREENHOUSE	184,166	283,333	30.21%
INSTRUMENT	3,373	5,189	0.55%
SERVICE	122,175	187,961	20.04%
WET	227,442	349,911	37.31%
Grand Total	609,625	937,884	100.00%

CNAS Core Campus Research ASF



Office Categories	ASF	Stations	AVG ASF / Station
ACAD OFF - FACULTY	55,974	409	137
ACAD OFF - GRAD & PD	59,088	1,062	56
ACAD OFF - LECTURER	1,574	16	98
ACAD OFF - OTHER	4,487	43	104
ACAD OFF - TA	5,829	155	38
ACAD OFF - RES STAFF	5,669	48	118
ADMINISTRATIVE	35,457	283	125
GRAND TOTAL	168,078	2,016	83

*Excludes office service space

AVG ASF / Office Station

